

MEETINGS &  
CONFERENCES



SQUAW VALLEY  
ALPINE MEADOWS





Thank you for considering Squaw Valley Alpine Meadows for your next meeting. This legendary location offers a variety of ways to be inspired — from natural scenic beauty and stunning views of Lake Tahoe and the High Sierra, to a myriad of exciting activities and team-building challenges, opportunities abound to craft the perfect itinerary for your attendees. Couple that with a selection of fully customizable meeting spaces from the base area to the mountaintop and you have the ideal setting for a productive and enjoyable gathering.

*“SO AMAZING! Setting, food and company was like a dream come true.” — one of our participants perfectly summed up CalSAE’s experience with holding our Party with The Partners event at Squaw Valley’s High Camp. Other comments included “awesome”, “incredible”, “one of a kind”. As the event director, I’d have to agree! From the moment participants arrived at the tram, they knew they were in for a special experience. The scenery and fun facts about Squaw Valley shared by the tram operators entertained participants as they traveled up the mountain. The views again took center stage when we arrived at High Camp. With views of the valley, the Olympic Rings and Lake Tahoe in the distance, use of our conference hashtag spiked as everyone shared photos.*

*Having both indoor and outdoor experiences provided a place for everyone to be comfortable. Some preferred enjoying the scenery through the expansive windows of the indoor space while listening to live music. Others preferred the refreshing mountain air and warmth that came from sitting around an outdoor fire, roasting Smores in the company of an Olympic medalist and an epic view.*

*This was one Party with The Partners that will be talked about for years to come. In fact, it was our highest rated in the history of the event! Thank you for creating such a memorable experience for our participants!”*

— GINA SUTHERLAND, CMP

**Director of Education & Events**, California Society Of Association Executives (CalSAE)



## THE DESTINATION

Squaw Valley Alpine Meadows is a year-round destination located just a 45-minute drive from the Reno-Tahoe International Airport and ten minutes from the crystal blue waters of Lake Tahoe or the bustle of historic downtown Truckee. In between sessions, guests can explore a myriad of activities, high altitude adventure and casual networking.





# THE VILLAGE AT SQUAW VALLEY

Stay in the heart of The Village steps away from the Squaw Valley meeting rooms, ski lifts, Aerial Tram, restaurants, boutiques and festivals. The Village at Squaw Valley offers slopeside condominium style suites centrally located to everything you need. Explore the resort's diverse restaurants, vibrant bars, pubs, art galleries and specialty shops. The Village also boasts a full service day spa and yoga studio.







## THINGS TO DO

Whether it's a quiet mountain hike or team-building activities, anyone can embark on their ideal adventure at Squaw Valley Alpine Meadows. From the slopes to the Village, the resort is an exciting mecca for both outdoor enthusiasts and for those looking to simply relax. Squaw Valley Alpine Meadows offers Lake Tahoe's best terrain choices for skiers and snowboarders of all abilities. World-class bike trails and mountain biking are nearby and High Camp, elevation 8200', accessed via the Aerial Tram, offers seasonal mountaintop hiking, swimming, skating and sightseeing in addition to dining. The Village at Squaw Valley boasts over 50 unique shops and restaurants and offers a jam-packed calendar of live music, family-friendly movie nights and world class events and festivals.



## WINTER

Skiing and Snowboarding  
Team Building Activities  
Squaw Valley Olympic Museum at High Camp  
Mountaintop Hot Tub at High Camp (spring)  
Scenic Aerial Tram Rides  
Snowtubing  
Yoga at the Wanderlust Yoga Studio  
Shopping  
Dining  
S'mores by the Firepits  
Ski & Snowboard Lessons  
Private Mountain Guides

## SUMMER

Hiking  
Biking  
Scenic Aerial Tram Rides  
Team Building Activities  
Mountaintop Pool and Hot Tub at High Camp  
Roller Skating at High Camp  
Geocaching at High Camp  
Via Ferrata  
Ropes Course  
Golf  
Dining  
Shopping  
Stand Up Paddle Board  
Lake Tahoe Water Sports







## THE LODGING

The Village at Squaw Valley offers slopeside condominium suites located above the meeting spaces, shops and restaurants with scenic views of Squaw Valley and the surrounding Sierra Nevada peaks. Available in one, two and three-bedroom options, every suite features a living room with stone hearth fireplaces, full kitchen, queen-sized sofa sleeper and private balcony.





## THE MEETING SPACES AND AMENITIES

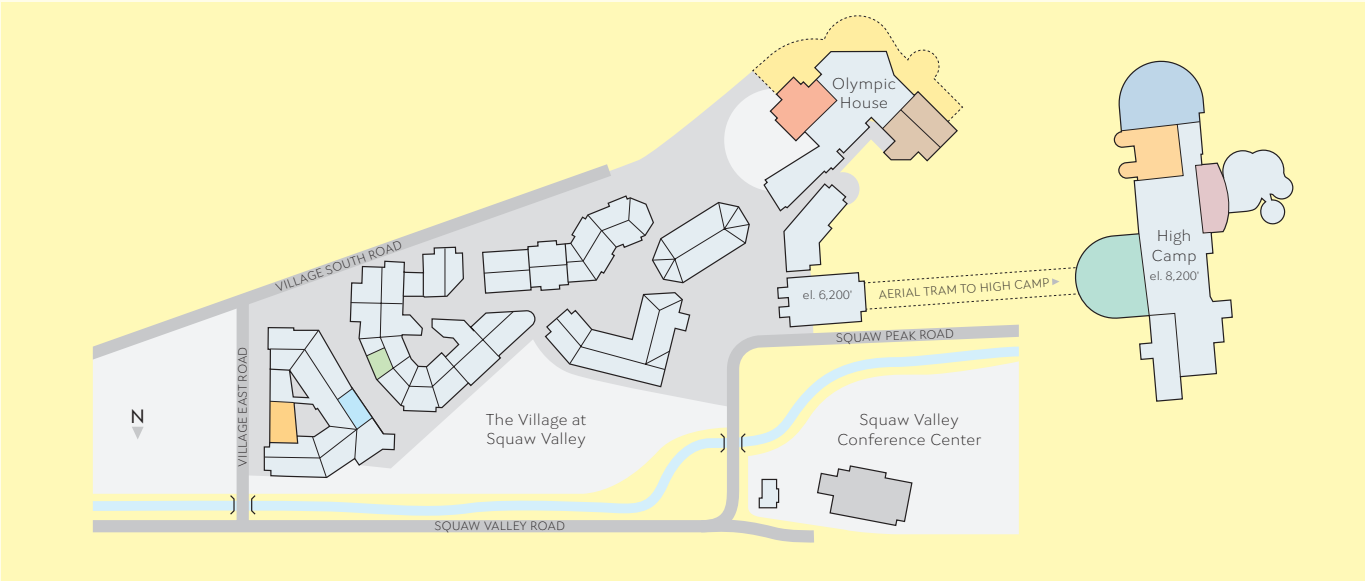
Just steps from the legendary slopes of Squaw Valley, The Village at Squaw Valley features over 40,000 square feet of customizable indoor and outdoor meeting space. Choose from a variety of venues including spacious meeting rooms both on and off the mountain and in a variety of styles from traditional to mountain-chic. All of our meeting spaces provide floor to ceiling windows with amazing natural light. Many offer locations to maximize High Sierra and Lake Tahoe views and all have adjacent access to outdoor spaces that are unrivaled for scenic beauty.

Squaw Valley's Executive Chef and culinary team take pride in designing creative experiences for memorable group gatherings. Choose from a variety of menus or be inspired by our selection of themed options including farm-to-table, international cuisine or local sustainable fare. We also offer pairing parties featuring local breweries, California wines or whiskey tastings.





# MAP



# MEETING SPACE CAPACITIES

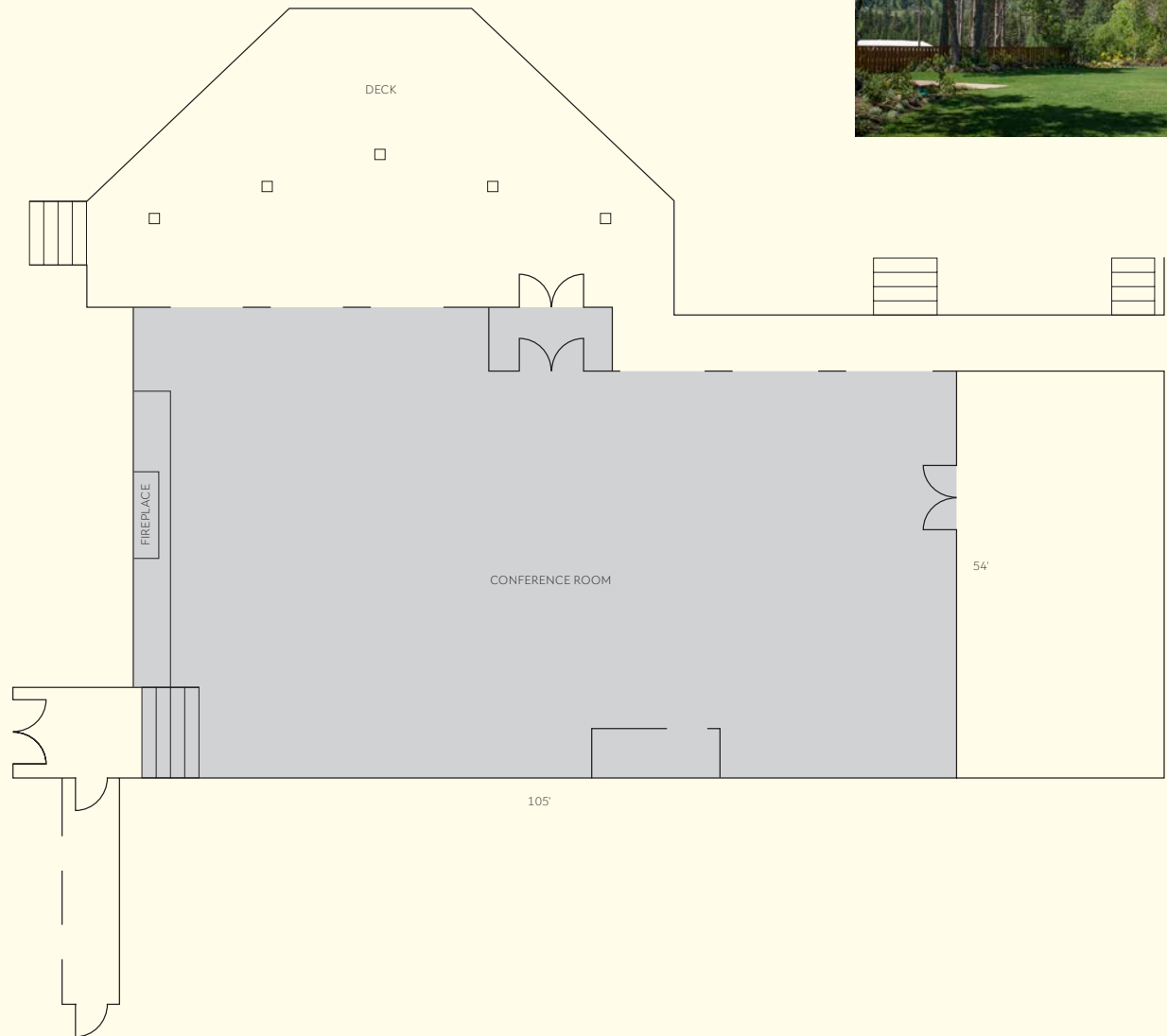
ROOM	SQ FEET	DIMENSIONS	CLASSROOM	CHEVRON CLASSROOM	U SHAPE	HOLLOW SQUARE	BOARDROOM	THEATER	ROUNDS (10)	RECEPTION
SQUAW VALLEY CONFERENCE CENTER										
Conference Room	5006	105'x54'	300	300	96	84		480	320	450
THE VILLAGE AT SQUAW VALLEY										
Palisades	2930	55'x55'	156	144	39	60	42	288	190	200
Palisades A	1366	25'x55'	90	72	39	60	42	150	100	x
Palisades B	765	28'x28'	45	36	27	36	22	72	40	x
Palisades C	738	27'x27'	45	36	27	36	22	72	40	x
Palisades B & C	1467	54'x27'	90	72	39	60	42	150	100	x
Base Camp	1880	unique	x	x	x	x	x	x	100	125
Base Camp Upper	990	35'x35'	63	x	36	36	28	80	60	x
Base Camp Lower	890	39'x20'	48	x	24	30	22	70	40	x
Alpenglow	1200	39'x29'	45	45	30	42	28	100	80	125
OLYMPIC HOUSE										
Plaza Bar	3456	unique	x	x	x	x	x	x	120	277
Bar One	4275	unique	x	x	x	x	x	x	170	325
Bar One Village	1819	unique	30	24	15	18	18	30	70	125
Bar One Mountain	2456	unique	x	x	x	x	x	x	100	200
Cushing Pond	x	unique	x	x	x	x	x	200	x	200
KT Deck	2503	unique	x	x	x	x	x	x	400	x
HIGH CAMP										
The Terrace	7702	unique	x	x	x	x	x	x	235*	250
Granite Sunroom	3819	unique	x	x	x	x	x	x	120*	200
Granite Bistro	1280	unique	x	x	x	x	x	x	84*	125
Olympic Museum	2640	unique	x	x	x	x	x	x	80*	120
Upper Deck	x	unique	x	x	x	x	x	200	x	350

\*Banquet seating only. Size of tables variable by venue.



# SQUAW VALLEY CONFERENCE CENTER

The original gathering spot for the 1960 Winter Olympic competitors, the Squaw Valley Conference Center is a unique historic site featuring vaulted ceilings and a grand fireplace. The beautifully landscaped gardens as well as the deck and conference space, with floor to ceiling windows, offer some of the most breathtaking views in the Valley. Receptions, trade shows, meal functions and Gala Events are always memorable when hosted in this spectacular venue.



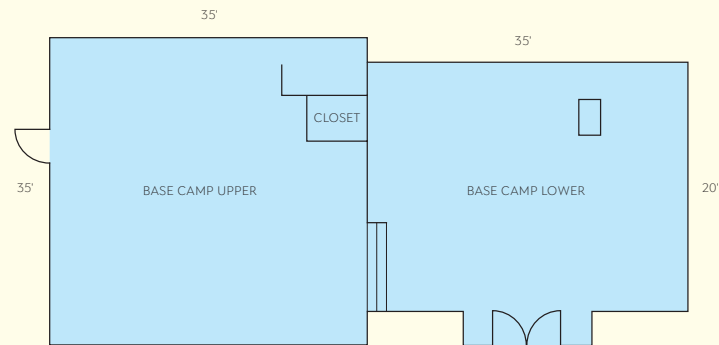


# THE VILLAGE AT SQUAW VALLEY

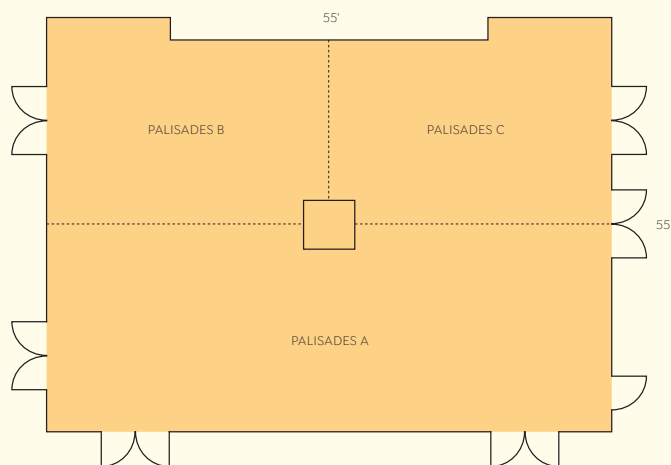
The Village at Squaw Valley offers meeting rooms conveniently located just steps from your accommodations. The Palisades Room provides groups with a meeting space that features three break-out options. Base Camp has a cozy mountain feel in a modern setting and the Alpenglow Room is a traditional meeting space, perfectly suited for small retreats, or may be set as an executive boardroom.



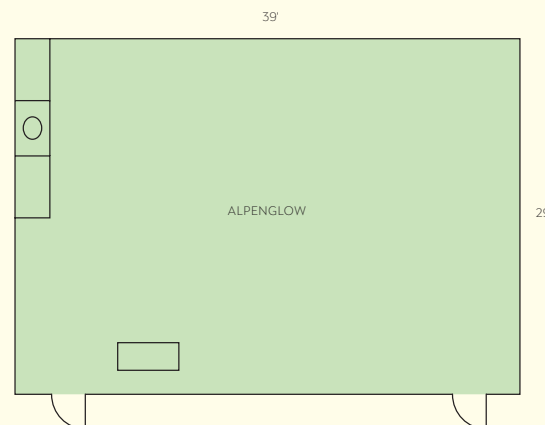
## BASE CAMP



## PALISADES



## ALPENGLOW

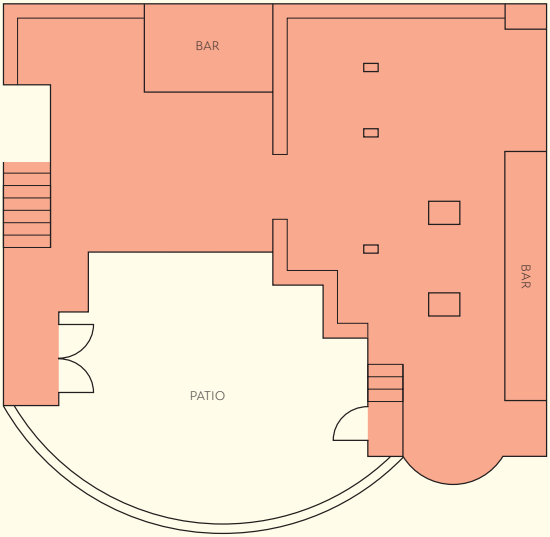




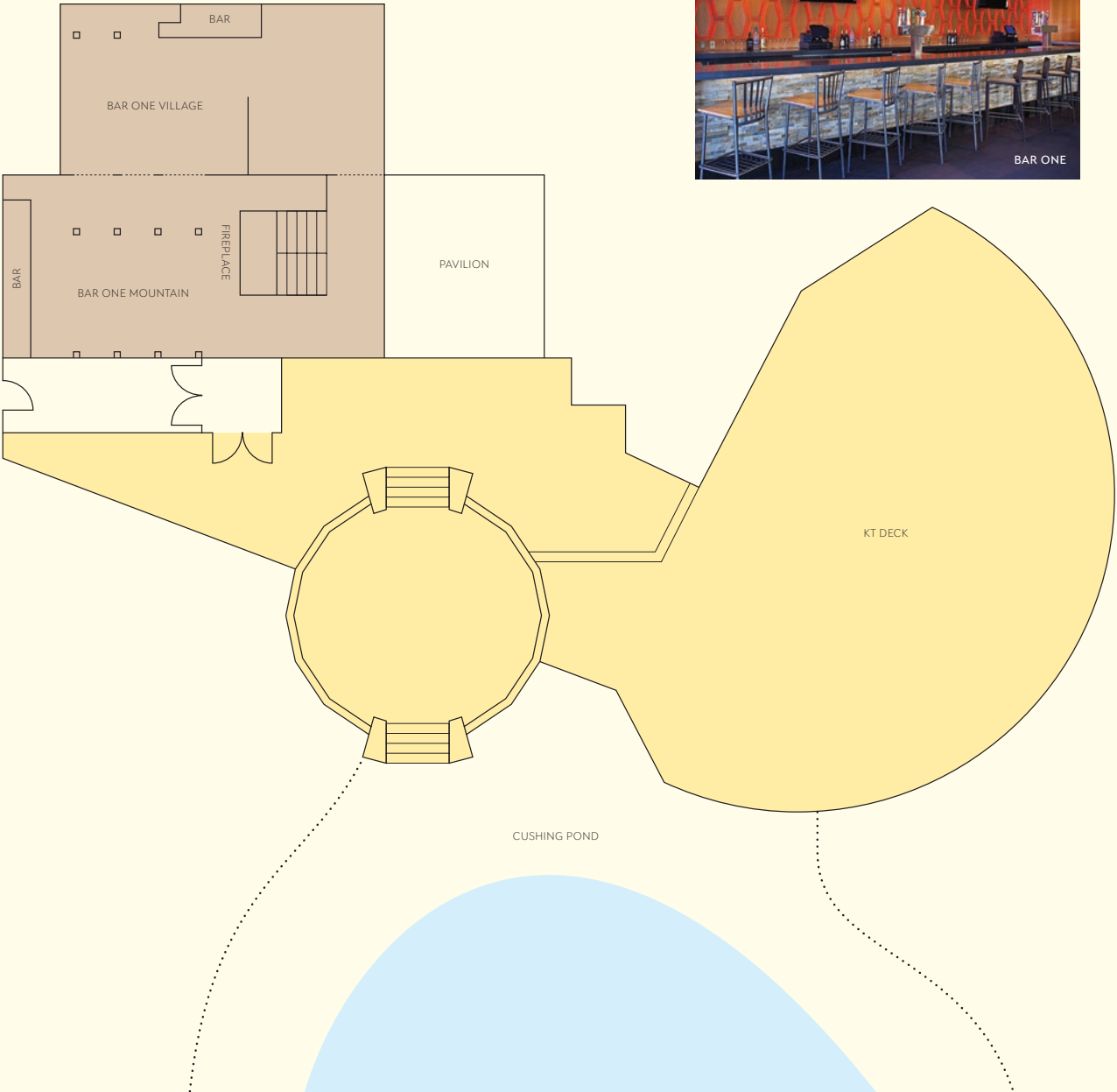
# OLYMPIC HOUSE

Nestled between the mountain and The Village, Olympic House provides a variety of settings and spaces to choose from. A modern take on the mountain gathering, it is an ideal venue for dining and socializing. The Pavilion is a more traditional space and the relaxed ambiance of the Plaza Bar and Bar One are contemporary spaces with striking mountain views. Olympic House venues adjoin a sprawling outdoor deck allowing for up to 10,000 square feet of indoor and outdoor space.

## PLAZA BAR



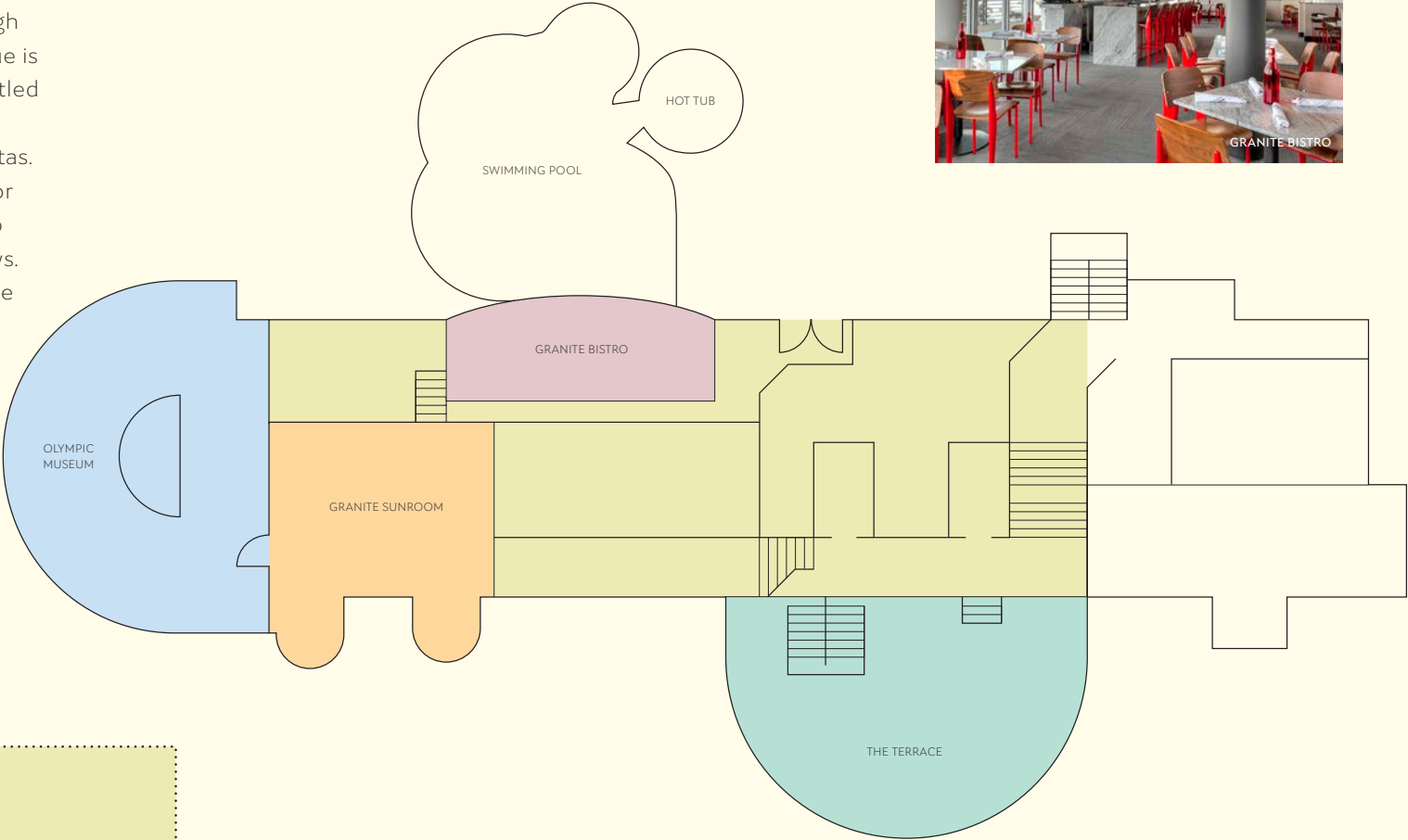
## BAR ONE | KT DECK



# HIGH CAMP

Ride the scenic Aerial Tram up 2,000 vertical feet over amazing valleys, creeks and granite rock formations to Squaw Valley's legendary High Camp. This one-of-a-kind venue is located at elevation 8,200', nestled beneath Sierra Nevada peaks with panoramic Lake Tahoe vistas. Choose from a variety of indoor and outdoor locations all set to maximize the surrounding views. Create a memorable experience by hosting an event in the Olympic Museum, a unique sun-filled room paying tribute to Squaw Valley's celebrated heritage.

## THE TERRACE | GRANITE BISTRO | GRANITE SUNROOM | OLYMPIC MUSEUM

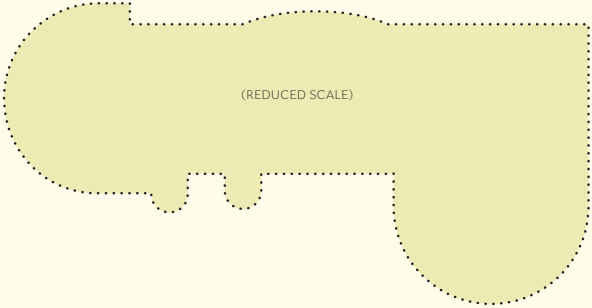


THE TERRACE



GRANITE BISTRO

## UPPER DECK



GRANITE SUNROOM



OLYMPIC MUSEUM



# CONTACT

Squaw Valley | Alpine Meadows  
Meeting & Conference Sales  
866-368-1357  
[sales@squawalpine.com](mailto:sales@squawalpine.com)

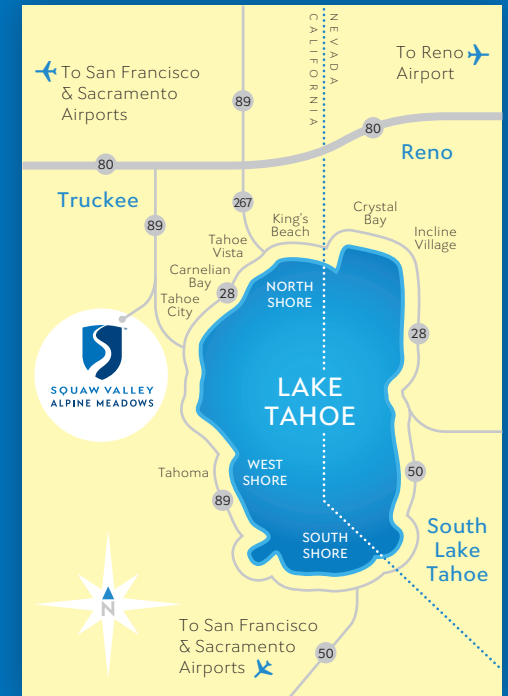
## GETTING HERE

### AIRPORTS

Reno/Tahoe International: 45 Miles  
Sacramento International: 114 Miles  
San Francisco International: 204 Miles

### TRAVEL BY CAR

Take I-80 to the 185 exit which is 45 miles west of Reno and 114 miles east of Sacramento. Take Hwy 89 south to the Squaw Valley entrance (seven miles) or the Alpine Meadows entrance (nine miles).



SQUAW VALLEY  
ALPINE MEADOWS

[squawalpine.com](http://squawalpine.com)